



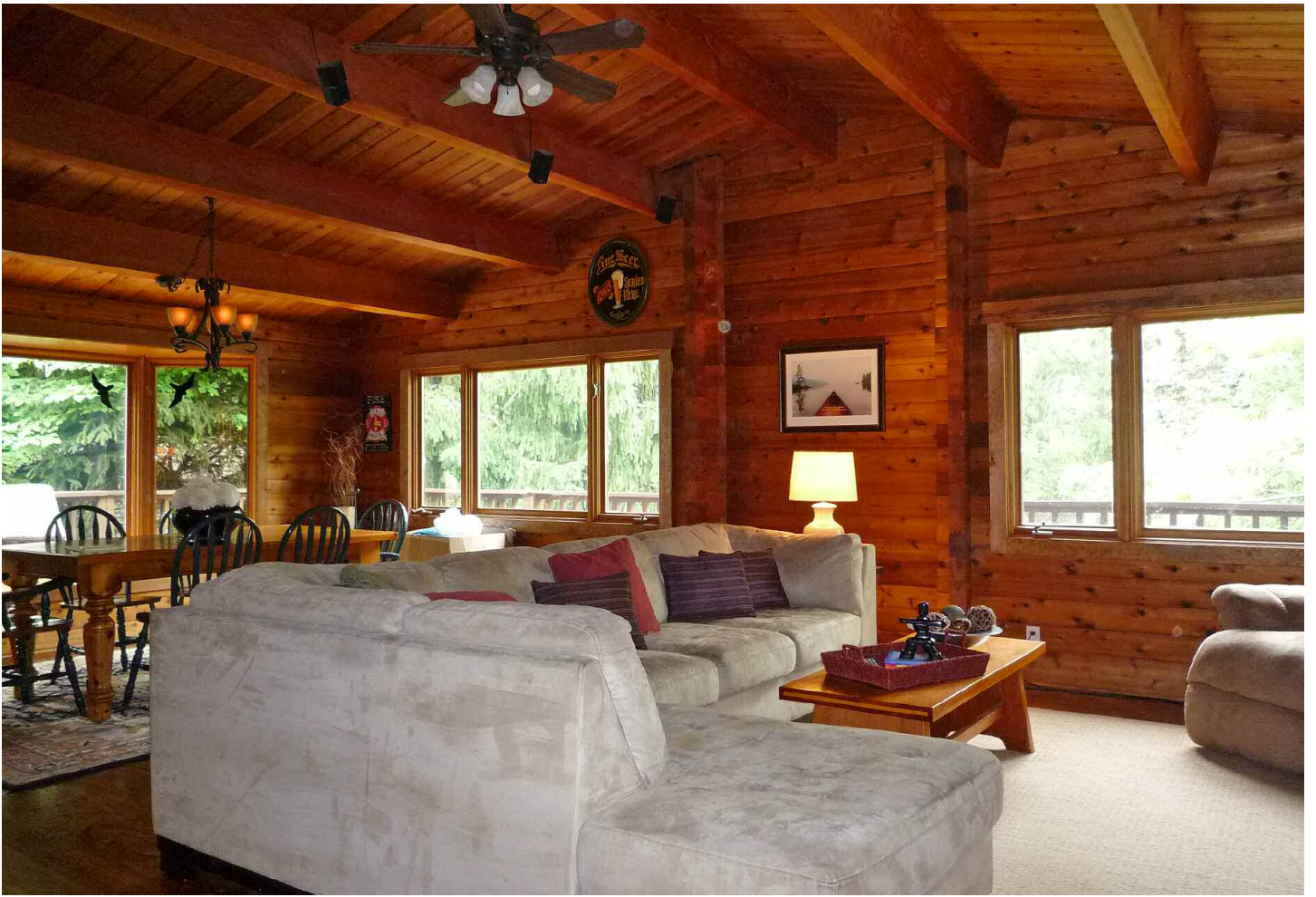
163 Chamonix
TOWN OF THE BLUE MOUNTAINS

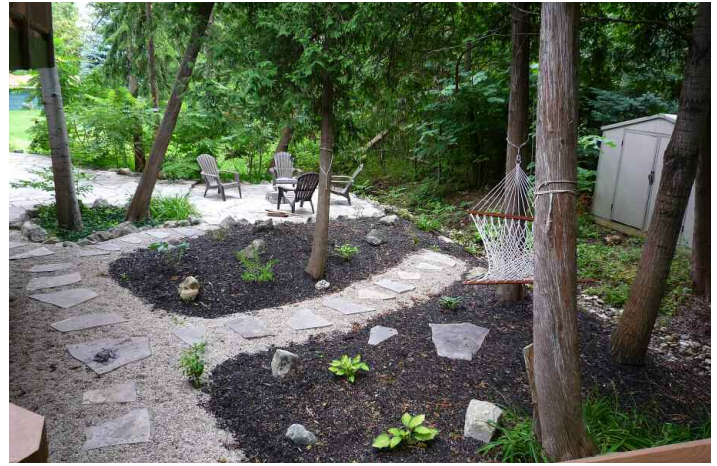
Nipissing Ridge Chalet

Timbers, rustic hemlock floors, dry stacked stone walls - everything you want in a weekend retreat. Conveniently located seconds to Northwinds Beach and the Georgian Trail and within close proximity to Craigeith and Alpine Ski Resorts.

All that is left to do is move in and enjoy.







- Desirable chalet in Nipissing Ridge
- Approximately 2700 sq.ft.
- 4 Bedrooms and 3 bath
- Study/den
- Newly renovated log chalet with lots of privacy from the street
- New kitchen cabinetry with black granite counters (2011)
- Stainless steel appliances
- Main floor family room
- Fabulous great room with wood burning fireplace makes for a warm and cozy atmosphere on a cold winter day
- Great backyard for entertaining - flagstone patio, firepit, river rock stream feature, hot tub
- Wide plank hemlock flooring
- Wrap around porch
- Oversized one car garage with plenty of storage and inside entry
- Lot size: 95'.13 X 175' X 95' X 170'