

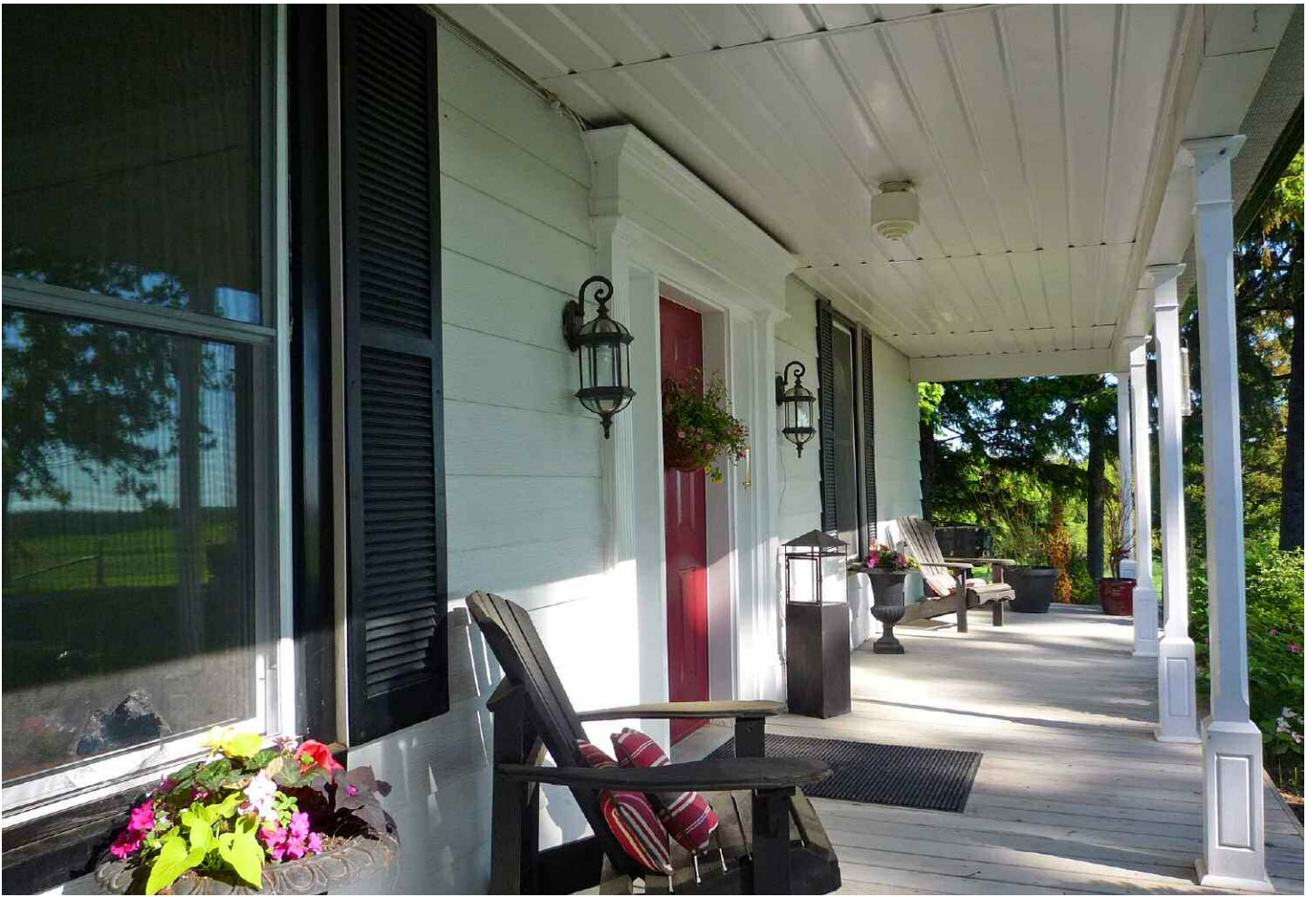
Circa 1860

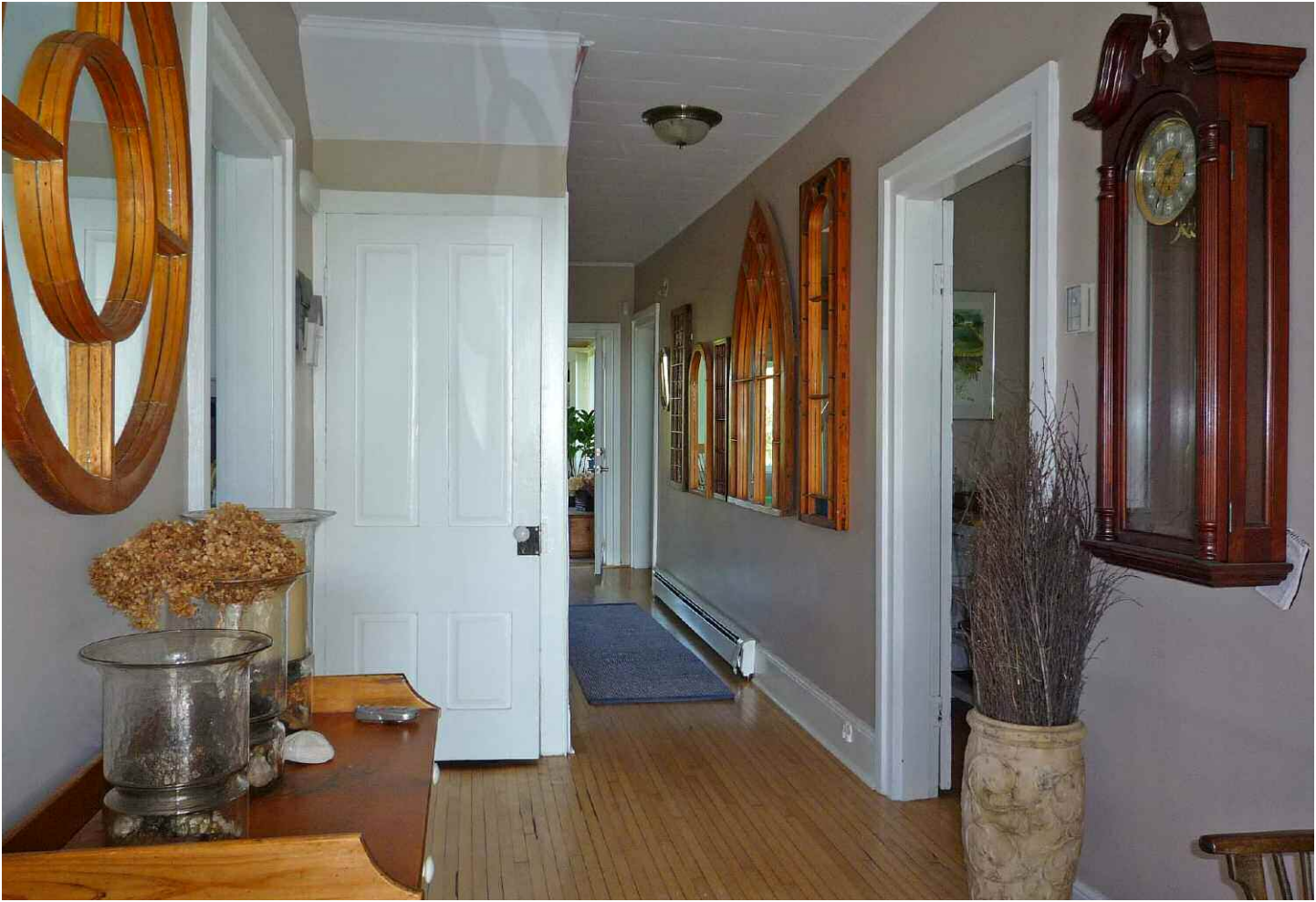


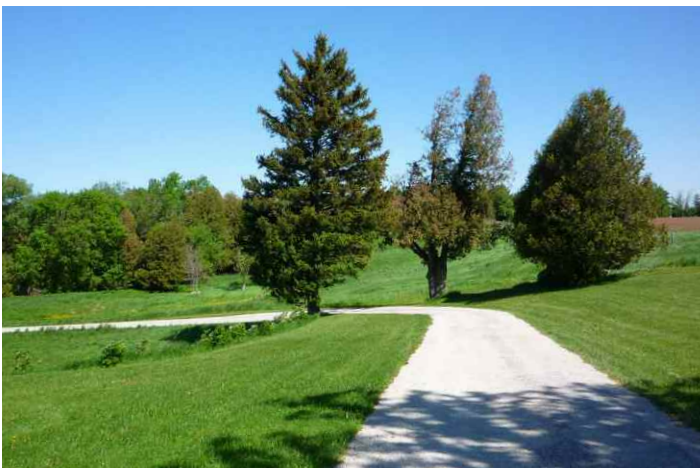
1185 Concession 6 North
CLEARVIEW

By The Batteaux Farm

Set well off the road with not a neighbour in site, you can't help but feel completely peaceful sitting on the verandah of this historic 1860 farmhouse. Nestled on a hillside with long pastoral views to the east and the ski hills to the west. The grand centre hall plan opens onto spacious rooms where you'll find the original hardwood flooring and wainscoting. The home has been recently updated, enjoy the modern conveniences of today and the charm of yesteryear.







- Approximately 2700 sq.ft.
- 48 acres
- Original hardwood flooring
- Recently updated kitchen with granite counter tops
- All new electric & plumbing
- 3 bedroom and 2 1/2 bath
- Built-in cupboards in 2 bedrooms
- Batteaux Creek runs through property
- Bank barn with 6 stalls, heated tack room with washer and dryer
- Paddocks and fields to grow your own hay
- Drive shed with heated studio space
- Sunroom and patio off kitchen
- Propane fireplace
- Propane 'auto on/off' generator
- UV filter and water softener
- Air conditioner unit in master bedroom and front hallway
- Solatube skylight bathroom and skylight in master bedroom
- Minutes to Collingwood and Creemore